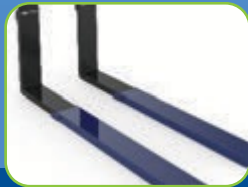
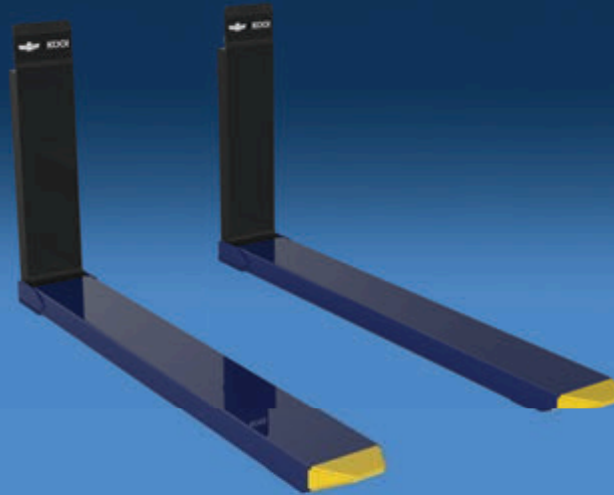


Extend the reach of your lift truck with Hydraulic Reachforks®



Efficiently load and unload with Telescopic forks and reduce operating costs.



Dual and single cylinder models to properly match the application.



High-strength steel outer fork covers reduce maintenance by improving wear life.



Hydraulic Fork Extensions (TFE) have thin profile for side pallet entry.

APPLICATION

Increase the efficiency of your lift truck by using Cascade-KOOI Hydraulic Reachforks® or Hydraulic Fork Extensions. With Telescopic Forks, trailers can be loaded and unloaded from one side for increased efficiency.

Usage of warehouse space can be improved by taking advantage of double-deep racking and utilizing Reachforks®.

Hydraulic Fork Extensions are designed to handle different pallets (GMA/Block pallets) from either the long or short side of the pallet.

Simply adjust the fork length to your long pallet or multiple pallet depth and pick the load.

FEATURES

Synchronized fork movement is ensured by the Reachfork® equalizer system, eliminating the need for a separate flow divider.

Unique design outer sleeve includes an integrated wear plate.

A reinforced heel design reduces deflection.

Specially designed wiper ring protects internal hydraulic components.

ISO ITA Class II, III, or IV mounting as standard for quick installation.

OPTIONS

Readily available in a variety of standard lengths and strokes with custom lengths available on special order.

Pin type, Drop Shank, and Custom mountings available.

Slim model ReachForks® available for easy entry on the shorter side pockets of some pallets.

Pallet Stops to prevent outer fork from protruding past the pallet entry.

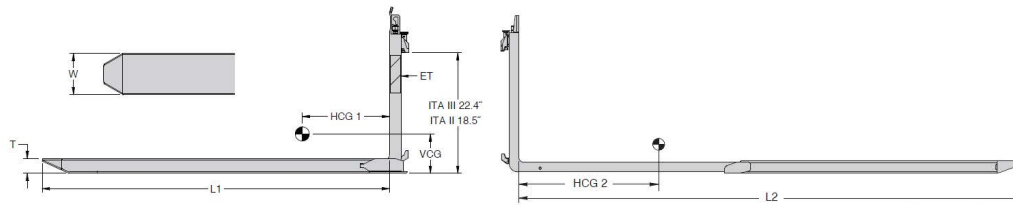
Fork Positioner Shank Lugs and Rolling Hose Kits to easily integrate into a Fork Positioner.

Load Backrest to support load when moving forward.

Extra wear strips under forks to improve fork life.

Stainless steel components to minimize electrical ignition hazards.

HYDRAULIC REACHFORKS®



Catalog Order No.	Capacity@ 24" (600 mm) Load Center		Mtg. Class	Effective Thickness ET	Blade Thickness T	Fork Width W	Shank Width	Fork Length (Retracted) L1	Fork Length (Extended) L2	Stroke S	Horizontal Ctr. of Gravity HCG 1	Horizontal Ctr. of Gravity HCG 2	Vertical Ctr. of Gravity VCG	Weight (Per Pair)	
	lbs	kg												lbs	kg
Double Cylinder – mainly on counterbalance and side-loader lift trucks for single-sided loading when retract power is required over speed															
25B-TFQ-2A-1100	5,500	2,500	II	1.7"	2.2"	6.3"	5.9"	43.3"	72.8"	29.5"	14.3"	21.1"	4.4"	392	178
25B-TFQ-2A-1200	5,500	2,500	II	1.7"	2.2"	6.3"	5.9"	47.2"	80.7"	33.5"	16.0"	23.9"	4.3"	416	189
25B-TFQ-2A-1350	5,500	2,500	II	1.7"	2.2"	6.3"	5.9"	53.1"	92.5"	39.4"	18.6"	28.2"	4.0"	453	206
25B-TFQ-2A-00007 ③	5,500	2,500	II	7.7"	2.2"	6.3"	5.9"	53.1"	92.5"	39.4"	18.2"	28.9"	3.8"	471	214
32B-TFQ-3A-1100 ①	7,050	3,200	III	1.7"	1.9"	6.3"	5.9"	43.3"	72.8"	29.5"	12.9"	19.1"	5.9"	387	176
32B-TFQ-3A-1200 ①	7,050	3,200	III	1.7"	1.9"	6.3"	5.9"	47.2"	80.7"	33.5"	14.5"	21.8"	5.6	407	185
32B-TFQ-3A-1350 ①	7,050	3,200	III	1.7"	1.9"	6.3"	5.9"	53.1"	92.5"	39.4"	17.0"	26.0"	5.3"	440	200
35B-TFQ-3A-1100	7,700	3,500	III	1.7"	2.2"	6.3"	5.9"	43.3"	72.8"	29.5"	13.5"	19.9"	5.8"	416	189
35B-TFQ-3A-1200	7,700	3,500	III	1.7"	2.2"	6.3"	5.9"	47.2"	80.7"	33.5"	15.2"	22.7"	5.5"	440	200
35B-TFQ-3A-1350	7,700	3,500	III	1.7"	2.2"	6.3"	5.9"	53.1"	92.5"	39.4"	17.8"	26.9"	5.1"	477	217
35B-TFQ-3A-00008 ③	7,700	3,500	III	7.7"	2.2"	6.3"	5.9"	53.1"	92.5"	39.4"	17.4"	27.6"	4.9"	495	225
45B-TFQ-3A-1100	9,900	4,500	III	1.7"	2.2"	6.3"	5.9"	43.3"	72.8"	29.5"	13.5"	19.9"	5.8"	416	189
45B-TFQ-3A-1200	9,900	4,500	III	1.7"	2.2"	6.3"	5.9"	47.2"	80.7"	33.5"	15.2"	22.7"	5.5"	440	200
45B-TFQ-3A-1350	9,900	4,500	III	1.7"	2.2"	6.3"	5.9"	53.1"	92.5"	39.4"	17.8"	26.9"	5.1"	477	217
58B-TFQ-4A-1100	12,750	5,800	IV	1.9"	2.4"	6.3"	5.9"	43.3"	72.8"	29.5"	12.4"	17.7"	8.7"	513	233
58B-TFQ-4A-1200	12,750	5,800	IV	1.9"	2.4"	6.3"	5.9"	47.2"	80.7"	33.5"	13.9"	20.2"	8.3"	539	245
58B-TFQ-4A-1350	12,750	5,800	IV	1.9"	2.4"	6.3"	5.9"	53.1"	92.5"	39.4"	16.3"	24.0"	7.8"	581	264
Hydraulic Extension Forks, for GMA Pallets (1.6" & 1.7" thick)															
17B-TFE-2A-0800 ①	3,740	1,700	II	1.6"	1.6"	5.0"	4.7"	31.5"	47.2"	15.7"	8.5"	9.4"	5.7"	198	90
17B-TFE-2A-1000 ①	3,740	1,700	II	1.6"	1.6"	5.0"	4.7"	39.4"	47.2"	7.87"	11.4"	12.2"	5.0"	231	105
17B-TFE-2A-00012 ①	3,740	1,700	II	1.6"	1.6"	5.0"	4.7"	47.2"	74.8"	27.6	15.3"	19.6"	4.5"	271	123
17B-TFE-2A-1200 ①	3,740	1,700	II	1.6"	1.6"	5.0"	4.7"	47.2"	78.7"	31.5"	14.8"	19.5"	4.5"	255	116
24B-TFE-2A-0800 ①	5,290	2,400	II	1.7"	1.7"	5.2"	4.7"	31.5"	47.2"	15.7"	8.7"	10.8"	5.7"	229	104
24B-TFE-2A-1000 ①	5,290	2,400	II	1.7"	1.7"	5.2"	4.7"	39.4"	47.2"	7.87"	11.8"	12.8	5.0"	266	121
24B-TFE-2A-1200 ①	5,290	2,400	II	1.7"	1.7"	5.2"	4.7"	47.2"	78.7"	31.5"	11.2"	20.1"	4.5"	297	135
24B-TFE-2A-00011 ① ③	5,290	2,400	II	1.8"	1.7"	5.2"	4.7"	47.2"	78.7"	31.5	15.1"	20.2"	4.5"	297	135
Hydraulic Extension Forks, for Block Pallets (2.2" thick)															
20B-TFE-2A-0800	4,400	2,000	II	1.7"	2.2"	5.2"	4.7"	31.5"	47.2"	15.7"	9.2"	11.5"	5.4"	249	113
20B-TFE-2A-1000	4,400	2,000	II	1.7"	2.2"	5.2"	4.7"	39.4"	47.2"	7.87"	12.4"	13.4"	4.8"	293	133
20B-TFE-2A-1200	4,400	2,000	II	1.7"	2.2"	5.2"	4.7"	47.2"	78.7"	31.5"	15.6"	20.5"	4.4"	319	145
30B-TFE-3A-0800	6,600	3,000	III	1.7"	2.2"	5.2"	4.7"	31.5"	47.2"	15.7"	8.7"	10.8"	6.9"	268	122
30B-TFE-3A-1000	6,600	3,000	III	1.7"	2.2"	5.2"	4.7"	39.4"	47.2"	7.87"	11.9"	12.9"	6.0"	317	144
30B-TFE-3A-1200	6,600	3,000	III	1.7"	2.2"	5.2"	4.7"	47.2"	78.7"	31.5"	15.0"	20.3"	5.6"	348	158
Single Cylinder – Converts any truck to a double deep with faster reach and retract speeds															
20B-TFT-2A-1100	4,400	2,000	II	1.7"	2.2"	5.2"	4.7"	43.3"	72.8"	29.5"	14.6"	20.9"	4.3"	323	147
20B-TFT-2A-1200	4,400	2,000	II	1.7"	2.2"	5.2"	4.7"	47.2"	80.7"	33.5"	16.3"	23.6"	4.1"	343	156
20B-TFT-2A-1350	4,400	2,000	II	1.7"	2.2"	5.2"	4.7"	53.1"	92.5"	39.4"	18.9"	28.0"	3.8"	374	170
20B-TFT-2A-00006 ②	4,400	2,000	II	7.7"	2.2"	5.2"	4.7"	53.1"	92.5"	39.4"	18.6"	28.9"	3.6"	396	180
25B-TFT-2A-00017 ②	5,500	2,500	II	7.7"	2.2"	5.2"	4.7"	53.1"	92.5"	39.4"	18.6"	28.9"	3.6"	394	179
30B-TFT-3A-1050	6,600	3,000	III	1.9"	2.4"	5.2"	4.7"	41.3"	72.8"	31.5"	13.8"	19.9"	5.8"	370	168
30B-TFT-3A-1100	6,600	3,000	III	1.7"	2.2"	5.2"	4.7"	43.3"	72.8"	29.5"	13.8"	20.0"	5.5"	345	157
30B-TFT-3A-1150	6,600	3,000	III	1.9"	2.4"	5.2"	4.7"	45.3"	80.7"	35.4"	15.4"	22.6"	5.2"	392	178
30B-TFT-3A-1200	6,600	3,000	III	1.7"	2.2"	5.2"	4.7"	47.2"	80.7"	33.5"	15.6"	22.8"	5.6"	365	166
30B-TFT-3A-1300	6,600	3,000	III	1.9"	2.4"	5.2"	4.7"	51.2"	92.5"	41.3"	17.9"	26.8"	5.3"	425	193
30B-TFT-3A-1350	6,600	3,000	III	1.7"	2.2"	5.2"	4.7"	53.1"	92.5"	39.4"	18.1"	26.8"	4.9"	396	180
30B-TFT-3A-00010	6,600	3,000	III	1.8"	2.2"	5.2"	4.7"	48.0"	80.3"	32.3"	15.9"	22.7"	2.2"	372	169
35B-TFT-3A-1100	7,700	3,500	III	1.9"	2.4"	5.2"	4.7"	43.3"	72.8"	29.5"	14.0"	19.7"	5.7"	378	172
35B-TFT-3A-1200	7,700	3,500	III	1.9"	2.4"	5.2"	4.7"	47.2"	80.7"	33.5"	16.4"	23.2"	5.4"	396	180
35B-TFT-3A-1350	7,700	3,500	III	1.9"	2.4"	5.2"	4.7"	53.1"	92.5"	39.4"	18.2"	26.2"	5.1"	436	198

① Supplied with Flow Divider Valve to be mounted on truck carriage.

② Includes pallet stop at 47.2"

③ Type 1 tip configuration

– Not recommended for clamping between forks.

–The lift truck manufacturer must determine the combined attachment and lift truck capacity.

– All necessary lift truck requirement to add the attachment will be provided by Cascade-KOOI.

– Consult Cascade for Reachforks on Multiple Load Handlers

– Pallet stops available upon request, consult Cascade.

Cascade Corporation • PO Box 20187 • Portland, OR 97294-0187 • USA • 800 CASCADE (227.2233) • Tel 503.669.6257 • Fax 800.693.3768 • Fax 503.669.6367
 Cascade Canada Ltd. • 5570 Timberlea Blvd. • Mississauga, Ontario L4W 4M6 • Canada • 800.380.2272 • Tel 905.629.7777 • Fax 905.629.7785